

Saturn7

Hangar • apron • halls • large areas • industrial and building lighting

Information

- Future PROOF> all components independently changeable
- Ready for connection and easy to install and maintain
- Easy integration into existing lighting towers
- Low weight and low wind load
- Large light-emitting and extremely powerful light output
- Highest efficiency of all system components - LongLIFE
- Different light distributions possible
- Optical cover made of safety glass
- Vibration-resistant
- ThermoProtect System against overtemperature of the LE
- Optional: external control by radio







Technical Informations

Farbtemperaturen:	3000K, 4000K, 5000K
Gehäuse:	Aluminium anodized
Kühlkörper:	Ø 330mm
Lebensdauer:	L80 60.000 - 100.000 h
Leistungsaufnahme :	560 Watt
Lichtaustrittsfläche :	255 mm
Lichtstrom:	85000lm on 5000K
Montage:	Mounting bracket V01.1 stainless steel: Setting range 90° (45°v/h), hole distance: 320mm (2x Ø12mm cable hole Ø20mm) Mounting bracket V01.2 stainless steel: Setting range 45°, hole distance: 320mm (2x Ø12mm cable hole Ø20mm) Fastening for chain suspension V02.1/V02.2: V02.1: integrated LED-control gear / V02.2: external LED-control gear Weight (V01.1/V01.2): ca. 14,5kg Weight (V02.1/V02.2): ca. 11kg
Schaltfunktionen:	Eco (on/off) Basic E1 Light E2 DALI
Schutzart Leuchte :	IP64 SKI
Überspannungsschutz :	10kA
Verwendung:	Hangar • apron • halls • large areas • industrial and building lighting
Zulässige Betriebsspannung:	100-240VAC, 50/60Hz
Zulässige Umgebungstemperatur:	- 40°C up to 50°C

BRAUN Lighting Solutions e. K. is a participant in the export initiative "Energie Effizienz – made in Germany", initiated by the Federal Ministry for the Economy and Technology. Due to the complexity of the many possible combinations of drivers and LED modules, the values shown for technical LED parameters, including performance parameters, are typical. Actual values of specific products in specific configurations may vary from these typical values. The information and diagrams contained in this document do not constitute an offer or contractual obligation. Product parameters may change as a result of technical innovation and will be undertaken without prior notice. Our manufacturing conforms to DIN EN and VDE regulations; the product conforms to European EMC regulations.

BRAUN Lighting Solutions
Nunsdorfer Ring 2-10
12277 Berlin
Germany

 www.braun.lighting
 info@braun-lighting.com
 +49 (0)30 7 007 763-100
 +49 (0)30 7 007 763-101



Saturn7

Hangar • apron • halls • large areas • industrial and building lighting

» Variante Eco:

- power consumption: 560 Watt
 - Luminous flux: 85k lm
 - System performance: 151lm/W
 - Manually via 10-stage code switch: No
 - 0-10V | 1-10V Interface| Dim-to-Off: Yes
 - AstroDimm: Yes
 - Dali interface: No
 - Half-night switching via control voltage 230Vac: No
-

» Variante Basic E1:

- power consumption: 60 - 560 Watt
 - Luminous flux: 85k lm
 - System performance: 151lm/W
 - Manually via 10-stage code switch: Yes
 - 0-10V | 1-10V Interface| Dim-to-Off: No
 - AstroDimm: Yes
 - Dali interface: No
 - Half-night switching via control voltage 230Vac: No
-

» Variante Light E2:


- power consumption: 60 - 560 Watt
 - Luminous flux: 85k lm
 - System performance: 151lm/W
 - Manually via 10-stage code switch: Yes
 - 0-10V | 1-10V Interface| Dim-to-Off: No
 - AstroDimm: Yes
 - Dali interface: No
 - Half-night switching via control voltage 230Vac: Yes
-

» Variante DALI:

- power consumption: 60 - 560 Watt
 - Luminous flux: 85k lm
 - System performance: 151lm/W
 - Manually via 10-stage code switch: No
 - 0-10V | 1-10V Interface| Dim-to-Off: Yes
 - AstroDimm: Yes
 - Dali interface: Yes
 - Half-night switching via control voltage 230Vac: No
-

BRAUN Lighting Solutions e. K. is a participant in the export initiative "Energie Effizienz – made in Germany", initiated by the Federal Ministry for the Economy and Technology. Due to the complexity of the many possible combinations of drivers and LED modules, the values shown for technical LED parameters, including performance parameters, are typical. Actual values of specific products in specific configurations may vary from these typical values. The information and diagrams contained in this document do not constitute an offer or contractual obligation. Product parameters may change as a result of technical innovation and will be undertaken without prior notice. Our manufacturing conforms to DIN EN and VDE regulations; the product conforms to European EMC regulations.

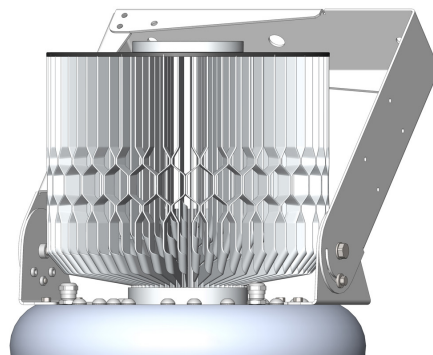
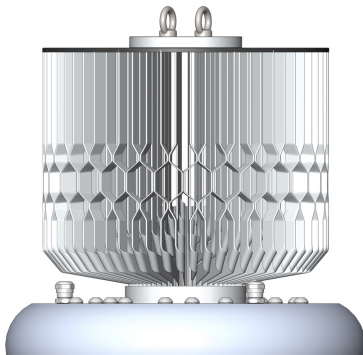
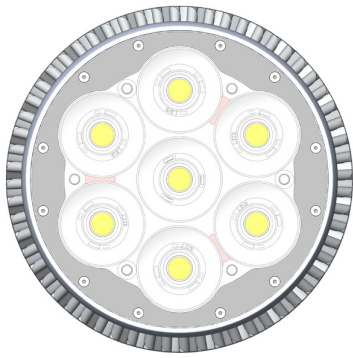
BRAUN Lighting Solutions
Nunsdorfer Ring 2-10
12277 Berlin
Germany

 www.braun.lighting
 info@braun-lighting.com
 +49 (0)30 7 007 763-100
 +49 (0)30 7 007 763-101



Saturn7

Hangar • apron • halls • large areas • industrial and building lighting



BRAUN Lighting Solutions e. K. is a participant in the export initiative "Energie Effizienz – made in Germany", initiated by the Federal Ministry for the Economy and Technology. Due to the complexity of the many possible combinations of drivers and LED modules, the values shown for technical LED parameters, including performance parameters, are typical. Actual values of specific products in specific configurations may vary from these typical values. The information and diagrams contained in this document do not constitute an offer or contractual obligation. Product parameters may change as a result of technical innovation and will be undertaken without prior notice. Our manufacturing conforms to DIN EN and VDE regulations; the product conforms to European EMC regulations.

BRAUN Lighting Solutions
Nunsdorfer Ring 2-10
12277 Berlin
Germany

 www.braun.lighting
 info@braun-lighting.com
 +49 (0)30 7 007 763-100
 +49 (0)30 7 007 763-101

