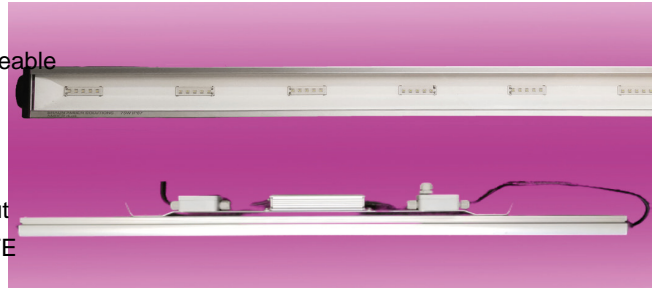


GreenGlow LED-Plantlight

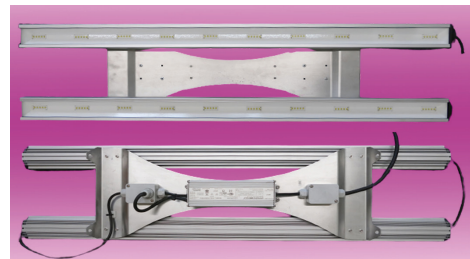
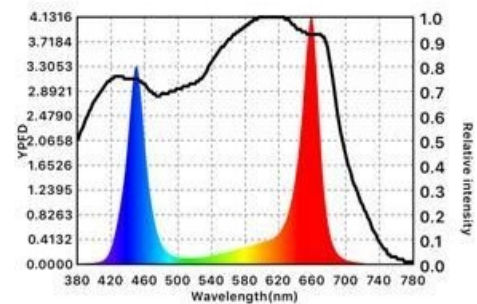
Optimized for plants with or without flowers

Information

- Future PROOF> all components independently changeable
- Ready for connection and easy to install and maintain
- Easy integration into existing lighting towers
- Low weight and low wind load
- Large light-emitting and extremely powerful light output
- Highest efficiency of all system components - LongLIFE
- Different light distributions possible
- Optical cover made of safety glass
- Vibration-resistant
- ThermoProtect System against overtemperature of the LED
- Optional: external control by radio



Ref.: McCREEs ACTION SPECTRUM



Technical Informations

| | |
|-----------------------------|--|
| Anschlüsse : | Interface: 1-10V |
| Befestigungsschnittstelle : | Mounting bracket for wire/chain suspension |
| Betriebsgeräte: | IP67 ENEC |
| Gehäuse: | Aluminium |
| Leistung : | 75 Watt 150 Watt |
| Oberfläche: | colourless anodised |
| Optische Abdeckung : | Safety glass heat treated IK08 |

BRAUN Lighting Solutions e. K. is a participant in the export initiative "Energie Effizienz – made in Germany", initiated by the Federal Ministry for the Economy and Technology. Due to the complexity of the many possible combinations of drivers and LED modules, the values shown for technical LED parameters, including performance parameters, are typical. Actual values of specific products in specific configurations may vary from these typical values. The information and diagrams contained in this document do not constitute an offer or contractual obligation. Product parameters may change as a result of technical innovation and will be undertaken without prior notice. Our manufacturing conforms to DIN EN and VDE regulations; the product conforms to European EMC regulations.

BRAUN Lighting Solutions
Nunsdorfer Ring 2-10
12277 Berlin
Germany

www.braun.lighting
info@braun-lighting.com
+49 (0)30 7 007 763-100
+49 (0)30 7 007 763-101



GreenGlow LED-Plantlight

Optimized for plants with or without flowers

| | |
|--------------------------------|---|
| Schaltfunktionen: | on/off (standard) |
| Schutzart Leuchte : | IP65 |
| Stoßfestigkeitsgrad : | IK08 |
| Verwendung: | Optimized for plants with or without flowers |
| Zubehör: | Incl. connection cable 3G1mm ² , free cable end: L = 1.0 m Complies with protection class 1 (SK I) |
| Zulässige Betriebsspannung: | 100-240VAC, 50/60Hz |
| Zulässige Umgebungstemperatur: | - 40°C up to 50°C |

» Variante einfach:

-
- Power: 75 Watt | 150 Watt
 - Dimensions: 1025mm x 70mm x 120mm
 - Weight: ca. 3,9 kg
-

» Variante doppelt:

-
- Power: 75 Watt | 150 Watt
 - Dimensions: 1025mm x 265mm x 120mm
 - Weight: ca. 7 kg
-

BRAUN Lighting Solutions e. K. is a participant in the export initiative "Energie Effizienz – made in Germany", initiated by the Federal Ministry for the Economy and Technology. Due to the complexity of the many possible combinations of drivers and LED modules, the values shown for technical LED parameters, including performance parameters, are typical. Actual values of specific products in specific configurations may vary from these typical values. The information and diagrams contained in this document do not constitute an offer or contractual obligation. Product parameters may change as a result of technical innovation and will be undertaken without prior notice. Our manufacturing conforms to DIN EN and VDE regulations; the product conforms to European EMC regulations.

BRAUN Lighting Solutions
Nunsdorfer Ring 2-10
12277 Berlin
Germany

 www.braun.lighting
 info@braun-lighting.com
 +49 (0)30 7 007 763-100
 +49 (0)30 7 007 763-101

