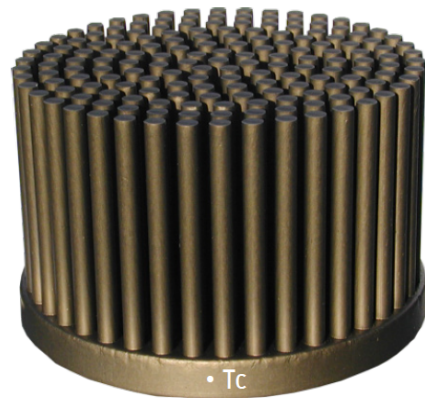


3 LENS PIN-MODUL LS12 BRAUN® PIN COLOR SYSTEM

Information

- Wide range of colors: 21 anodized colors
 - LED module system suitable for indoor and outdoor use IP 68
 - Free combination possibilities with regard to color/LVK
 - UV-resistant high-performance lenses made of PMMA
 - Ready to use "Plug and Play" module
 - High lumen/watt efficiency
 - Ambient temperature -40C° to +35C°
- Optional
- Temperature monitoring (ThermoProtect)
 - Adjustability of the LED performance



Technical Informations

Gehäusemaße :	Ø80,8mm x 49,5mm
IP :	68
Lebensdauer:	L70 > 50.000h
Leistung :	23,5 Watt
Oberfläche:	Large colour selection: 21 anodised colours (wood, ocean, red alert, springtime, redhead)
Zulässige Umgebungstemperatur:	- 40°C up to 35°C

» Variante 01 co:




- Power: 23,5 Watt
- Manually via 10-stage code switch: No
- 0-10V | 1-10V Interface| Dim-to-Off: Yes
- Half-night switching via control voltage 230Vac: No
- Adjustable power in watts: No
- ThermoProtect System: No

» Variante 02 co:

- Power: 23,5 Watt
- Manually via 10-stage code switch: Yes
- 0-10V | 1-10V Interface| Dim-to-Off: No
- Half-night switching via control voltage 230Vac: Yes
- Adjustable power in watts: Yes
- ThermoProtect System: Yes

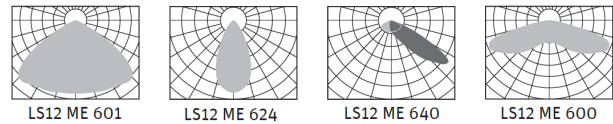
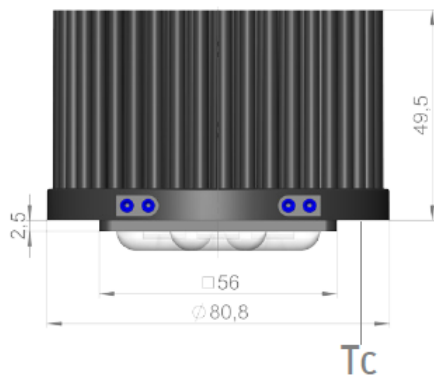
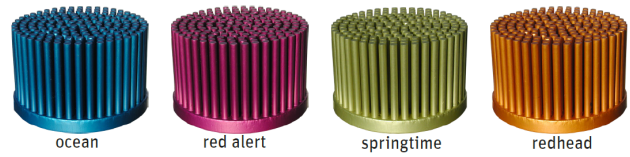
BRAUN Lighting Solutions e. K. is a participant in the export initiative "Energie Effizienz – made in Germany", initiated by the Federal Ministry for the Economy and Technology. Due to the complexity of the many possible combinations of drivers and LED modules, the values shown for technical LED parameters, including performance parameters, are typical. Actual values of specific products in specific configurations may vary from these typical values. The information and diagrams contained in this document do not constitute an offer or contractual obligation. Product parameters may change as a result of technical innovation and will be undertaken without prior notice. Our manufacturing conforms to DIN EN and VDE regulations; the product conforms to European EMC regulations.

BRAUN Lighting Solutions
Nunsdorfer Ring 2-10
12277 Berlin
Germany

 www.braun.lighting
 info@braun-lighting.com
 +49 (0)30 7 007 763-100
 +49 (0)30 7 007 763-101



3 LENS PIN-MODUL LS12 BRAUN® PIN COLOR SYSTEM



BRAUN Lighting Solutions e. K. is a participant in the export initiative "Energie Effizienz – made in Germany", initiated by the Federal Ministry for the Economy and Technology. Due to the complexity of the many possible combinations of drivers and LED modules, the values shown for technical LED parameters, including performance parameters, are typical. Actual values of specific products in specific configurations may vary from these typical values. The information and diagrams contained in this document do not constitute an offer or contractual obligation. Product parameters may change as a result of technical innovation and will be undertaken without prior notice. Our manufacturing conforms to DIN EN and VDE regulations; the product conforms to European EMC regulations.

BRAUN Lighting Solutions
Nunsdorfer Ring 2-10
12277 Berlin
Germany

 www.braun.lighting
 info@braun-lighting.com
 +49 (0)30 7 007 763-100
 +49 (0)30 7 007 763-101

