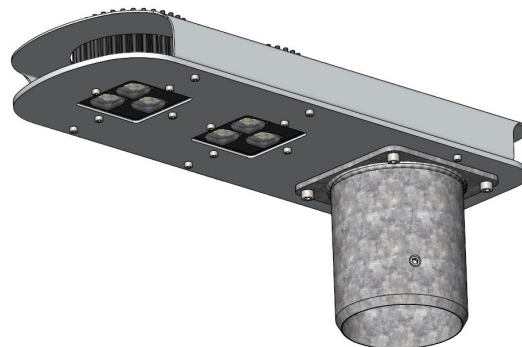


NewNight® Pole top luminaire PIN-BOARD 2S

Streets - parking lot - settlement and district lighting

Information

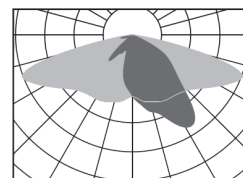
- Pole top luminaire of the newest generation
- FuturePROOF > all components independently changeable
- Ready for connection and easy to install and maintain
- Easy integration into existing lighting towers
- Low weight and low wind load
- Highest efficiency of all system components - LongLIFE• Different light distributions possible
- Changeable LED-Module with FlexPIN Technology
- High-performance lens system made of PMMA (UV-resistant)
- ThermoProtect System against overtemperature of the LED
- Vibration-resistant



LS12 ME600
Lighting for one or two-sided arrangement of poles, also with lower mounting heights and larger distances



LS12 ME612
Lighting for pedestrian and bicycle paths with one sided arrangement of poles, also with lower mounting heights and larger distances



Technical Informations

Betriebsgeräte:	BRAUN® 3LENS PIN-Modul LS12
Breite:	54 mm
Farbtemperaturen:	3000K, 4000K, 5000K, 5700K , 2700K, 3500K
Gehäuse:	Aluminum painted to RAL or DB
Gewicht:	3 kg
Höhe:	140 mm
Länge:	385 mm
Lebensdauer:	L80 60.000 - 100.000 h
Leistungsaufnahme :	60 Watt
Lichtstrom:	5076lm on 4000K
Optische Abdeckung :	High-performance PMMA lens system (UV-resistant)
Schaltfunktionen:	Eco (on/off) Basic E1 Light E2 DALI
Schutzklasse :	IP67 SKI (SKII on demand)
Technische Informationen :	

BRAUN Lighting Solutions e. K. is a participant in the export initiative "Energie Effizienz – made in Germany", initiated by the Federal Ministry for the Economy and Technology. Due to the complexity of the many possible combinations of drivers and LED modules, the values shown for technical LED parameters, including performance parameters, are typical. Actual values of specific products in specific configurations may vary from these typical values. The information and diagrams contained in this document do not constitute an offer or contractual obligation. Product parameters may change as a result of technical innovation and will be undertaken without prior notice. Our manufacturing conforms to DIN EN and VDE regulations; the product conforms to European EMC regulations.

BRAUN Lighting Solutions
Nunsdorfer Ring 2-10
12277 Berlin
Germany

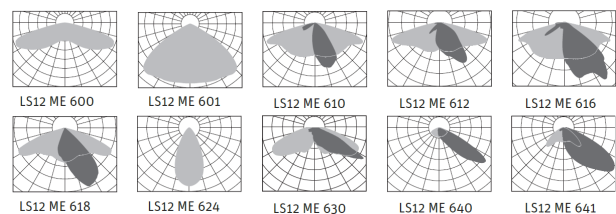
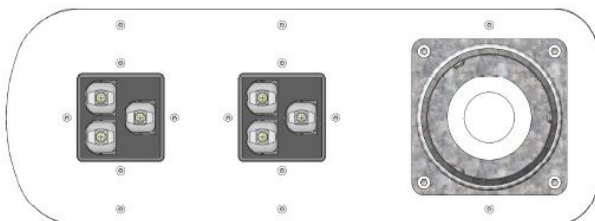
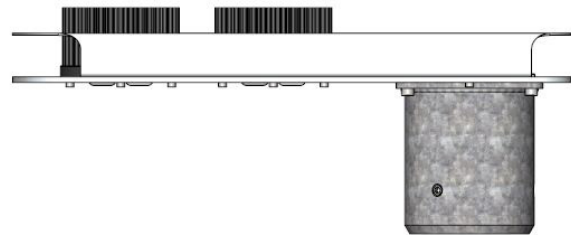
www.braun.lighting
info@braun-lighting.com
+49 (0)30 7 007 763-100
+49 (0)30 7 007 763-101



NewNight® Pole top luminaire PIN-BOARD 2S

Streets - parking lot - settlement and district lighting

Verwendung:	Streets - parking lot - settlement and district lighting
Zubehör:	Basic E1: Power consumption adjustable - manually adjustable of basic brightness Light E2: Power consumption adjustable - manually adjustable of basic brightness and reduced brightness DALI: Interface wire to wire Surge protection 10kA Adapter for spigot Ø60mm Special painting
Zulässige Betriebsspannung:	90-305VAC, 50/60Hz
Zulässige Umgebungstemperatur:	- 40°C up to 50°C



Freely selectable light distributions

BRAUN Lighting Solutions e. K. is a participant in the export initiative "Energie Effizienz – made in Germany", initiated by the Federal Ministry for the Economy and Technology. Due to the complexity of the many possible combinations of drivers and LED modules, the values shown for technical LED parameters, including performance parameters, are typical. Actual values of specific products in specific configurations may vary from these typical values. The information and diagrams contained in this document do not constitute an offer or contractual obligation. Product parameters may change as a result of technical innovation and will be undertaken without prior notice. Our manufacturing conforms to DIN EN and VDE regulations; the product conforms to European EMC regulations.

BRAUN Lighting Solutions
Nunsdorfer Ring 2-10
12277 Berlin
Germany

www.braun.lighting
info@braun-lighting.com
+49 (0)30 7 007 763-100
+49 (0)30 7 007 763-101



NewNight® Pole top luminaire PIN-BOARD 2S

Streets - parking lot - settlement and district lighting

» Variante Eco:

- Luminous flux: 5076lm on 4000K
 - power consumption: 60 Watt
 - Recommended mounting height: 3 up to 5m
 - Manually via 10-stage code switch: No
 - 0-10V | 1-10V Interface| Dim-to-Off: Yes
 - AstroDimm: Yes
 - Dali interface: No
 - Half-night switching via control voltage 230Vac: No
-

» Variante Basic E1:

- Luminous flux: 5076lm on 4000K
 - power consumption: 10 - 60 Watt
 - Recommended mounting height: 3 up to 5m
 - Manually via 10-stage code switch: Yes
 - 0-10V | 1-10V Interface| Dim-to-Off: No
 - AstroDimm: Yes
 - Dali interface: No
 - Half-night switching via control voltage 230Vac: No
-

» Variante Light E2:





- Luminous flux: 5076lm on 4000K
 - power consumption: 10 - 60 Watt
 - Recommended mounting height: 3 up to 5m
 - Manually via 10-stage code switch: Yes
 - 0-10V | 1-10V Interface| Dim-to-Off: No
 - AstroDimm: Yes
 - Dali interface: No
 - Half-night switching via control voltage 230Vac: Yes
-

» Variante DALI:

- Luminous flux: 5076lm on 4000K
 - power consumption: 1 - 60 Watt
 - Recommended mounting height: 3 up to 5m
 - Manually via 10-stage code switch: No
 - 0-10V | 1-10V Interface| Dim-to-Off: No
 - AstroDimm: Yes
 - Dali interface: Yes
 - Half-night switching via control voltage 230Vac: No
-

BRAUN Lighting Solutions e. K. is a participant in the export initiative "Energie Effizienz – made in Germany", initiated by the Federal Ministry for the Economy and Technology. Due to the complexity of the many possible combinations of drivers and LED modules, the values shown for technical LED parameters, including performance parameters, are typical. Actual values of specific products in specific configurations may vary from these typical values. The information and diagrams contained in this document do not constitute an offer or contractual obligation. Product parameters may change as a result of technical innovation and will be undertaken without prior notice. Our manufacturing conforms to DIN EN and VDE regulations; the product conforms to European EMC regulations.

BRAUN Lighting Solutions
Nunsdorfer Ring 2-10
12277 Berlin
Germany

 www.braun.lighting
 info@braun-lighting.com
 +49 (0)30 7 007 763-100
 +49 (0)30 7 007 763-101

