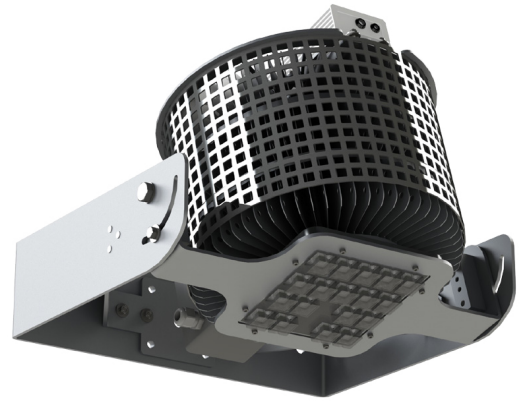


# NewNight® BigTAB Pole Mount High-Intensity Lamp M1

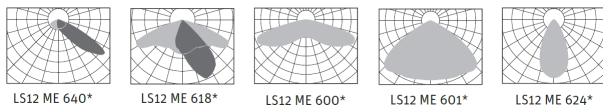
## Information

- Optimized for the illumination of large areas
- UV-resistant high-performance lenses made of PMMA
- Integrated innovative ThermoProtect System
- Insensitive to vibrations
- Ready to use, "Plug and Play" module
- Surge protection
- Optional: Adjustable LED power
- Optional: Daylight-dependent control
- Optional: Presence control



## Technical Informations

Neigungswinkel einstellbar :	+90°/-10°
Zulässige Umgebungstemperatur:	- 30°C up to 60°C



LS12 ME 640\*    LS12 ME 618\*    LS12 ME 600\*    LS12 ME 601\*    LS12 ME 624\*

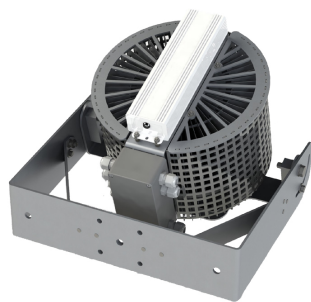






Illustration with optional equipment

BRAUN Lighting Solutions e. K. is a participant in the export initiative "Energie Effizienz – made in Germany", initiated by the Federal Ministry for the Economy and Technology. Due to the complexity of the many possible combinations of drivers and LED modules, the values shown for technical LED parameters, including performance parameters, are typical. Actual values of specific products in specific configurations may vary from these typical values. The information and diagrams contained in this document do not constitute an offer or contractual obligation. Product parameters may change as a result of technical innovation and will be undertaken without prior notice. Our manufacturing conforms to DIN EN and VDE regulations; the product conforms to European EMC regulations.

BRAUN Lighting Solutions  
Nunsdorfer Ring 2-10  
12277 Berlin  
Germany

 [www.braun.lighting](http://www.braun.lighting)  
 [info@braun-lighting.com](mailto:info@braun-lighting.com)  
 +49 (0)30 7 007 763-100  
 +49 (0)30 7 007 763-101



# NewNight® BigTAB Pole Mount High-Intensity Lamp M1

---

## » Variante ON/OFF:

---

- Modulleistung: 150W / 14 klm
  - Manuell über 10stufigen Codierschalter: Nein
  - 0-10V | 1-10V Schnittstelle | Dim-to-Off: Ja
  - AstroDimm: Ja
  - Dali Schnittstelle: Nein
  - Halbnachtschaltung über Steuerspannung 230Vac: Nein
  - PWM: Ja
  - ThermoProtect System: Ja
  - LDR Schalteingang: Nein
- 

## » Variante Basic:

---

- Modulleistung: 150W / 14 klm
  - Manuell über 10stufigen Codierschalter: Ja
  - 0-10V | 1-10V Schnittstelle | Dim-to-Off: Nein
  - AstroDimm: Ja
  - Dali Schnittstelle: Nein
  - Halbnachtschaltung über Steuerspannung 230Vac: Nein
  - PWM: Ja
  - ThermoProtect System: Ja
  - LDR Schalteingang: Nein
  - einstellbare Leistungen in Watt ca.: 25 - 150W
- 

## » Variante Light:

---

- Modulleistung: 150W / 14 klm
  - Manuell über 10stufigen Codierschalter: Ja
  - 0-10V | 1-10V Schnittstelle | Dim-to-Off: Nein
  - AstroDimm: Ja
  - Dali Schnittstelle: Nein
  - Halbnachtschaltung über Steuerspannung 230Vac: Ja
  - PWM: Ja
  - ThermoProtect System: Ja
  - LDR Schalteingang: Nein
  - einstellbare Leistungen in Watt ca.: 25 - 150W
- 

## » Variante DALI:



---

- Modulleistung: 150W / 14 klm
  - Manuell über 10stufigen Codierschalter: Nein
  - 0-10V | 1-10V Schnittstelle | Dim-to-Off: Nein
  - AstroDimm: Ja
  - Dali Schnittstelle: Ja
  - Halbnachtschaltung über Steuerspannung 230Vac: Nein
  - PWM: Ja
  - ThermoProtect System: Ja
  - LDR Schalteingang: Nein
  - einstellbare Leistungen in Watt ca.: 25 - 150W
- 

BRAUN Lighting Solutions e. K. is a participant in the export initiative "Energie Effizienz – made in Germany", initiated by the Federal Ministry for the Economy and Technology. Due to the complexity of the many possible combinations of drivers and LED modules, the values shown for technical LED parameters, including performance parameters, are typical. Actual values of specific products in specific configurations may vary from these typical values. The information and diagrams contained in this document do not constitute an offer or contractual obligation. Product parameters may change as a result of technical innovation and will be undertaken without prior notice. Our manufacturing conforms to DIN EN and VDE regulations; the product conforms to European EMC regulations.

---

BRAUN Lighting Solutions  
Nunsdorfer Ring 2-10  
12277 Berlin  
Germany

 [www.braun.lighting](http://www.braun.lighting)  
 [info@braun-lighting.com](mailto:info@braun-lighting.com)  
 +49 (0)30 7 007 763-100  
 +49 (0)30 7 007 763-101



# NewNight® BigTAB Pole Mount High-Intensity Lamp M1

---

» Variante Full:




---

- Modulleistung: 150W / 14 klm
  - Manuell über 10stufigen Codierschalter: Ja
  - 0-10V | 1-10V Schnittstelle | Dim-to-Off: Nein
  - AstroDimm: Ja
  - Dali Schnittstelle: Nein
  - Halbnachtschaltung über Steuerspannung 230Vac: Ja
  - PWM: Ja
  - ThermoProtect System: Ja
  - LDR Schalteingang: Nein
  - einstellbare Leistungen in Watt ca.: 25 - 150W
- 

BRAUN Lighting Solutions e. K. is a participant in the export initiative "Energie Effizienz – made in Germany", initiated by the Federal Ministry for the Economy and Technology. Due to the complexity of the many possible combinations of drivers and LED modules, the values shown for technical LED parameters, including performance parameters, are typical. Actual values of specific products in specific configurations may vary from these typical values. The information and diagrams contained in this document do not constitute an offer or contractual obligation. Product parameters may change as a result of technical innovation and will be undertaken without prior notice. Our manufacturing conforms to DIN EN and VDE regulations; the product conforms to European EMC regulations.

---

BRAUN Lighting Solutions  
Nunsdorfer Ring 2-10  
12277 Berlin  
Germany

 [www.braun.lighting](http://www.braun.lighting)  
 [info@braun-lighting.com](mailto:info@braun-lighting.com)  
 +49 (0)30 7 007 763-100  
 +49 (0)30 7 007 763-101

